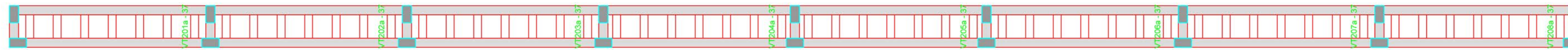
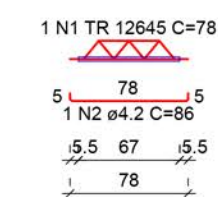


PLANTA DE VIGOTAS PRÉ-MOLDADAS
escala 1:50

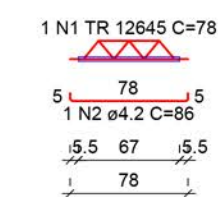


PLANTA DE VIGOTAS PRÉ-MOLDADAS
escala 1:50

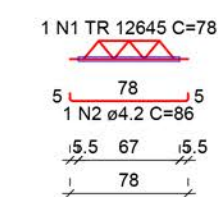
VT101a (7 unidades)
(L101)
ESC 1:50



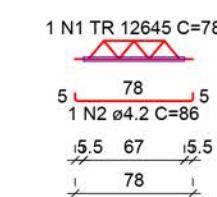
VT102a (7 unidades)
(L102)
ESC 1:50



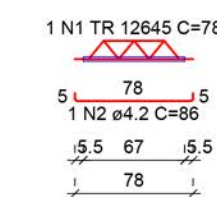
VT103a (7 unidades)
(L103)
ESC 1:50



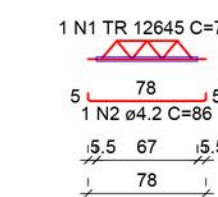
VT104a (7 unidades)
(L104)
ESC 1:50



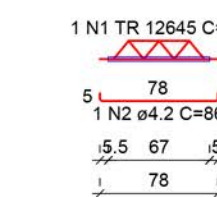
VT105a (7 unidades)
(L105)
ESC 1:50



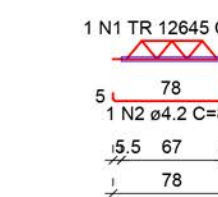
VT106a (7 unidades)
(L106)
ESC 1:50



VT107a (7 unidades)
(L107)
ESC 1:50



VT108a (7 unidades)
(L108)
ESC 1:50



RELAÇÃO DO AÇO
7xVT101a 7xVT102a 7xVT103a
7xVT104a 7xVT105a 7xVT106a
7xVT107a 7xVT108a

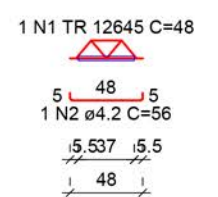
AÇO	N	DIAM (mm)	QUANT	C.UNIT (cm)	C.TOTAL (cm)
CA60	1	2	TR 12645	56	78
				86	4368
					4816

RESUMO DO AÇO

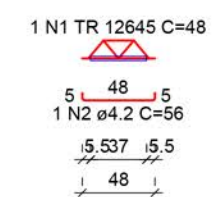
AÇO	DIAM (mm)	C.TOTAL (m)	PESO + 0% (kg)
CA60	4.2	48.2	5.2
TR 12645		43.7	38.9
PESO TOTAL (kg)			
CA60		44.1	

Volume de concreto (C-30) = 0.00 m³
Área de forma = 0.00 m²

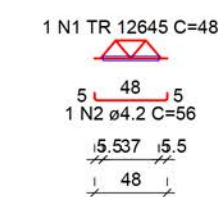
VT201a (7 unidades)
(L201)
ESC 1:50



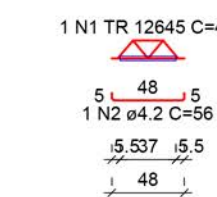
VT202a (7 unidades)
(L202)
ESC 1:50



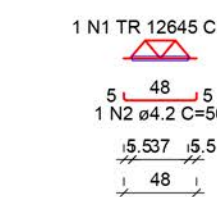
VT203a (7 unidades)
(L203)
ESC 1:50



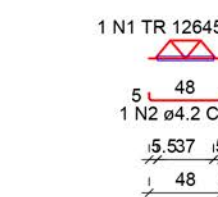
VT204a (7 unidades)
(L204)
ESC 1:50



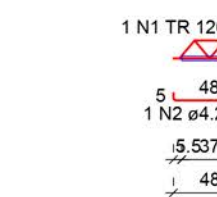
VT205a (7 unidades)
(L205)
ESC 1:50



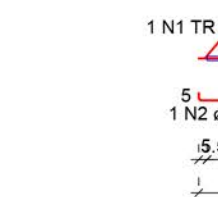
VT206a (7 unidades)
(L206)
ESC 1:50



VT207a (7 unidades)
(L207)
ESC 1:50



VT208a (7 unidades)
(L208)
ESC 1:50



RELAÇÃO DO AÇO
7xVT201a 7xVT202a 7xVT203a
7xVT204a 7xVT205a 7xVT206a
7xVT207a 7xVT208a

AÇO	N	DIAM (mm)	QUANT	C.UNIT (cm)	C.TOTAL (cm)
CA60	1	2	TR 12645	56	48
				56	2688
					3136

RESUMO DO AÇO

AÇO	DIAM (mm)	C.TOTAL (m)	PESO + 0% (kg)
CA60	4.2	31.4	3.4
TR 12645		26.9	23.9
PESO TOTAL (kg)			
CA60		27.3	

Volume de concreto (C-30) = 0.00 m³
Área de forma = 0.00 m²



PREFEITURA DO MUNICÍPIO DE MONTE AZUL PAULISTA
ESTADO DE SÃO PAULO
Praça Rio Branco nº. 86 – CEP 14.730-000

Projeto Básico
DET. LAJES DA ARQ. MAIOR

Folha:
PBA 08/12

Objeto: CONSTRUÇÃO DE CENTRO ESPORTIVO	Autor Projeto: André Ricardo Magalhães Baricordi Eng. Civil – CREA nº 506.112.425-0
Proprietário: MUNICÍPIO DE MONTE AZUL PAULISTA - SP	Proprietário: MARCELO OTAVIANO DOS SANTOS PREFEITO DO MUNICÍPIO DE MONTE AZUL PAULISTA - SP
Endereço: RUA ANDRÉ ERNESTO FÁVERO esq. RUA MARLY F. DE MORAES	
Município: MONTE AZUL PAULISTA	Estado: SP
Matrícula / Transcrição: -	Convênio: -
Coordenadas Geográficas / SAD69: -	